

AASHTO Extreme Weather Event Symposium



2012 Waldo Canyon Fire

Colorado Springs, CO

Presented by:

David Watt, PE

Colorado Department of Transportation

May 21, 2013

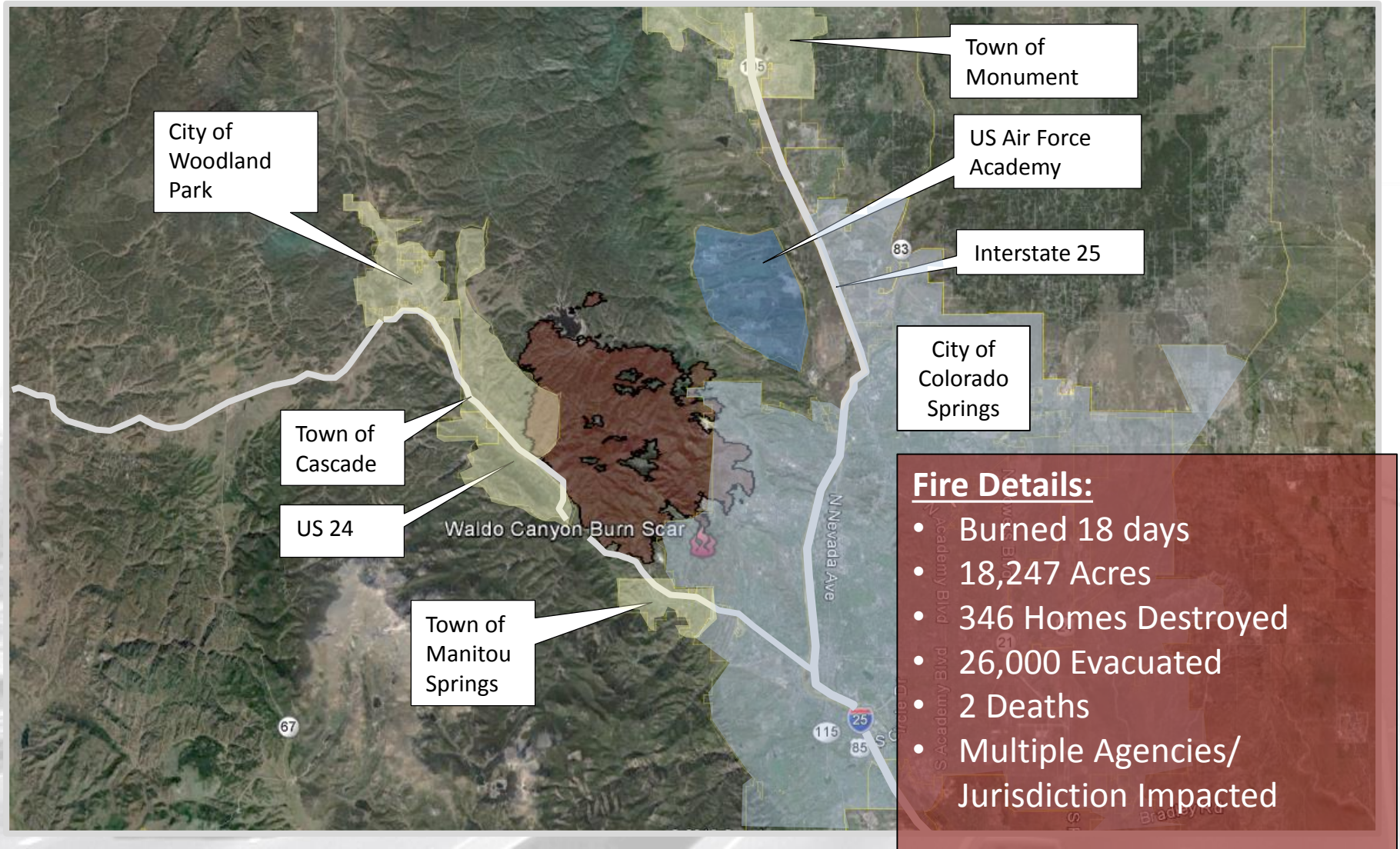


2012 Colorado Wildfires

- Record Heat and Drought
- Mountainous Terrain
- High Winds
- Limited Resources State and Country Wide



2012 Waldo Canyon Fire



CDOT Responses to Waldo Canyon Fire

- Maintenance Responses
 - Emergency
 - Planning
 - Repairs
- Fire Mitigation Project
 - Sediment Capture
 - Embankment Stability
 - Slope Stabilization
- Coordination/Cooperation/Communication



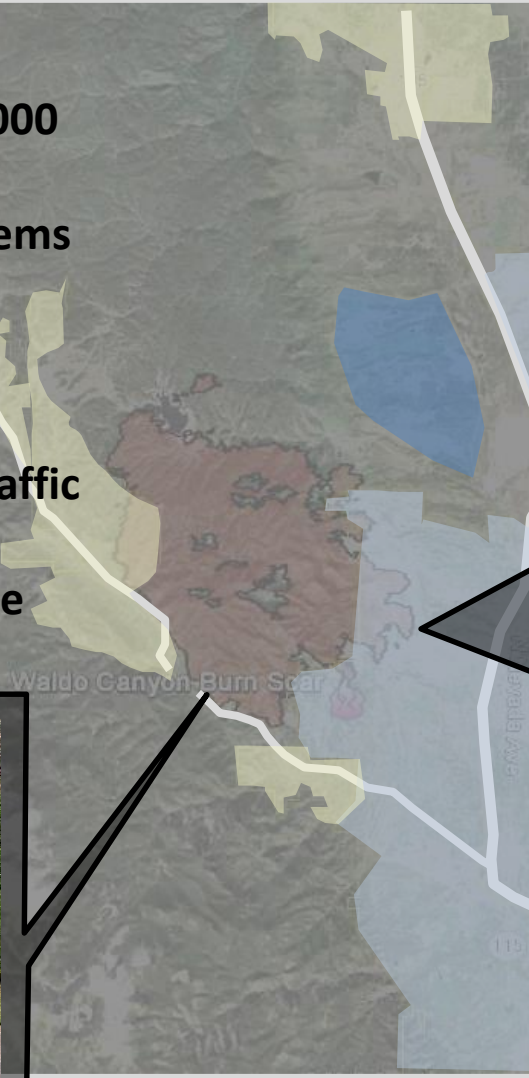
2012 Waldo Canyon Fire

Impacts to I-25

- Closure to evacuate 26,000 west side residents.
- Daytime Visibility Problems leading to additional congestion.

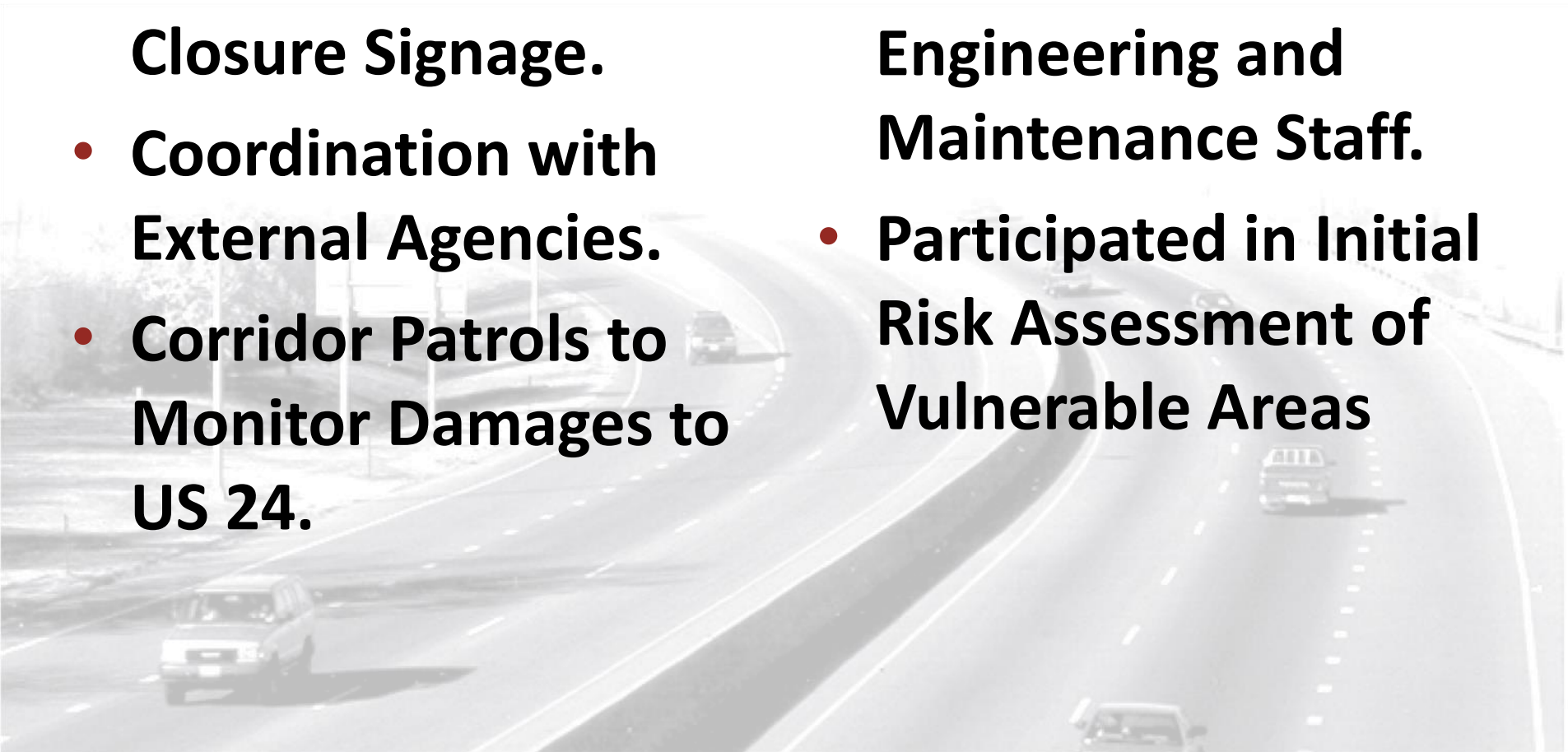
Impacts to US-24

- Closure to all through traffic
- Communities Evacuated along 10 miles within the Canyon.

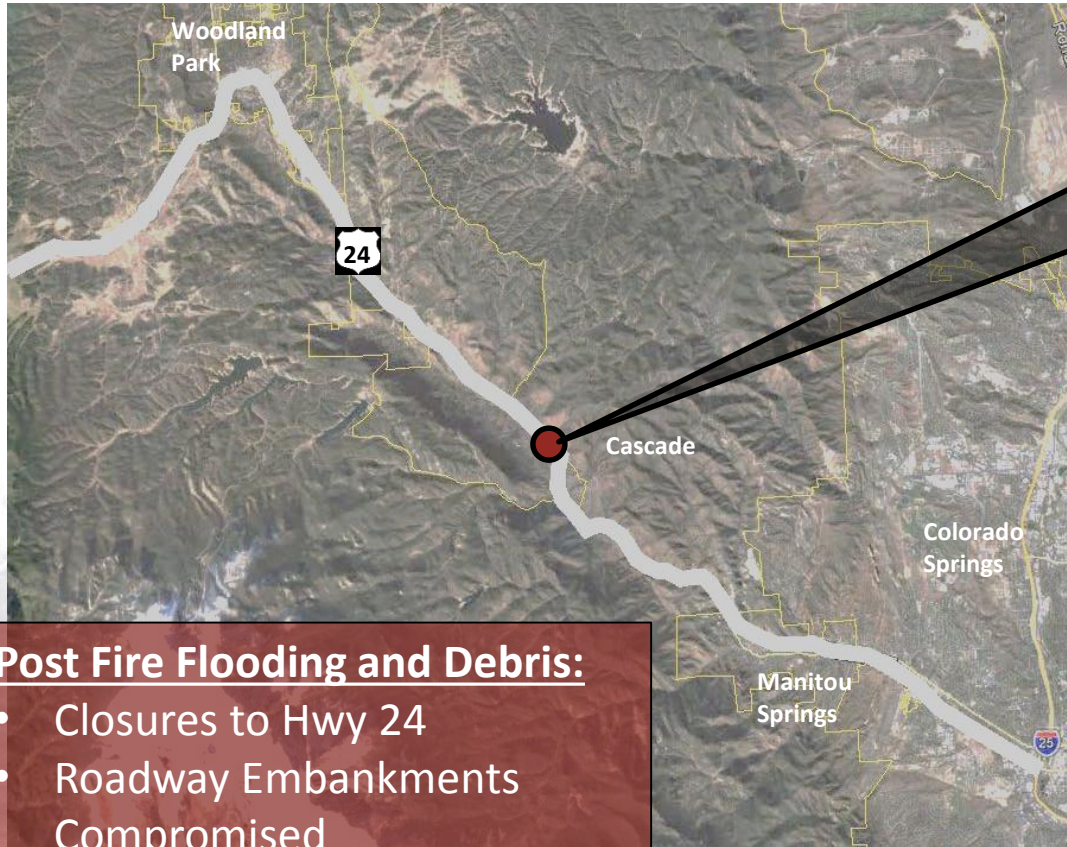


CDOT Response to Waldo Canyon Fire

- **Maintenance Staff Provided Road Closure Signage.**
- **Coordination with External Agencies.**
- **Corridor Patrols to Monitor Damages to US 24.**
- **Internal CDOT Coordination with Engineering and Maintenance Staff.**
- **Participated in Initial Risk Assessment of Vulnerable Areas**



Post - Waldo Canyon Fire Impacts



Post Fire Flooding and Debris:

- Closures to Hwy 24
- Roadway Embankments Compromised
- Local Roads Not Passible for Alternative Routes
- Maintenance Efforts Focused on Drainages Along US 24



Post - Waldo Canyon Fire CDOT Response

- **Participated in Post-Fire Studies**
- **Increased Emphasis of Storm Drainage Maintenance and Debris Removal from the Structures**
- **Rain Gages Installed Providing Text Alerts to CDOT Maintenance Staff**
- **Design Construction Package to Provide a More Reliable US 24**



Post - Waldo Canyon Fire CDOT Response

Flood Event Monitoring

- **NWS Issues a Flash Flood Watch / Warnings**
- **Burn Areas are monitored by Law Enforcement**
- **Equipment Staged along the Corridor for Immediate Response**
- **Active Monitoring along Hwy 24 by CDOT Personnel during Warnings**



Lessons Learned

- **Provide Emergency Response Plan. Run Exercises with Real Time Roadway Closures.**
- **Maintenance Emphasis on Storm Drainage Facilities. Important to Keeping Structures Clear.**
- **CDOT Recognizes New Environment.**



US 24 / WALDO CANYON BURN CORRIDOR EMERGENCY RESPONSE PLAN



April 18, 2013

Lessons Learned

- **Need to Find Opportunities to Integrate CDOT Into the Community Command.**
- **Logistics Issues and CDOT Staff Willingness to Participate with Peer Agencies.**
- **CDOT Knowledge with Post Fire Flooding and Debris Mitigation is Critical.**
- **ER Designation for Pre-Disaster Mitigation Projects along Major Highways?**
- **Improved External and Internal CDOT Relationships.**

