

# Environmental Justice Peer Exchange

AASHTO • Center for Environmental Excellence • July 10, 2020



Puget Sound Regional Council



# Puget Sound Regional Council (PSRC)



## Regional planning agency

- Develops policies and coordinates decision about regional growth, transportation, and economic development planning

## Composed of over 80 jurisdictions:

- 4 counties, 82 cities and towns, ports, state and local transportation agencies, tribal governments
- 4.2 million people

## Develop regional plans

- VISION 2050
- Regional Transportation Plan
- Regional Economic Strategy



# PSRC History



## WA State Environmental Policy Act (1972)

### EJ has informed plans for 20+ years

- 1994 Executive Order on Environmental Justice (EO 12898)
- Identify and address disproportionately negative impacts



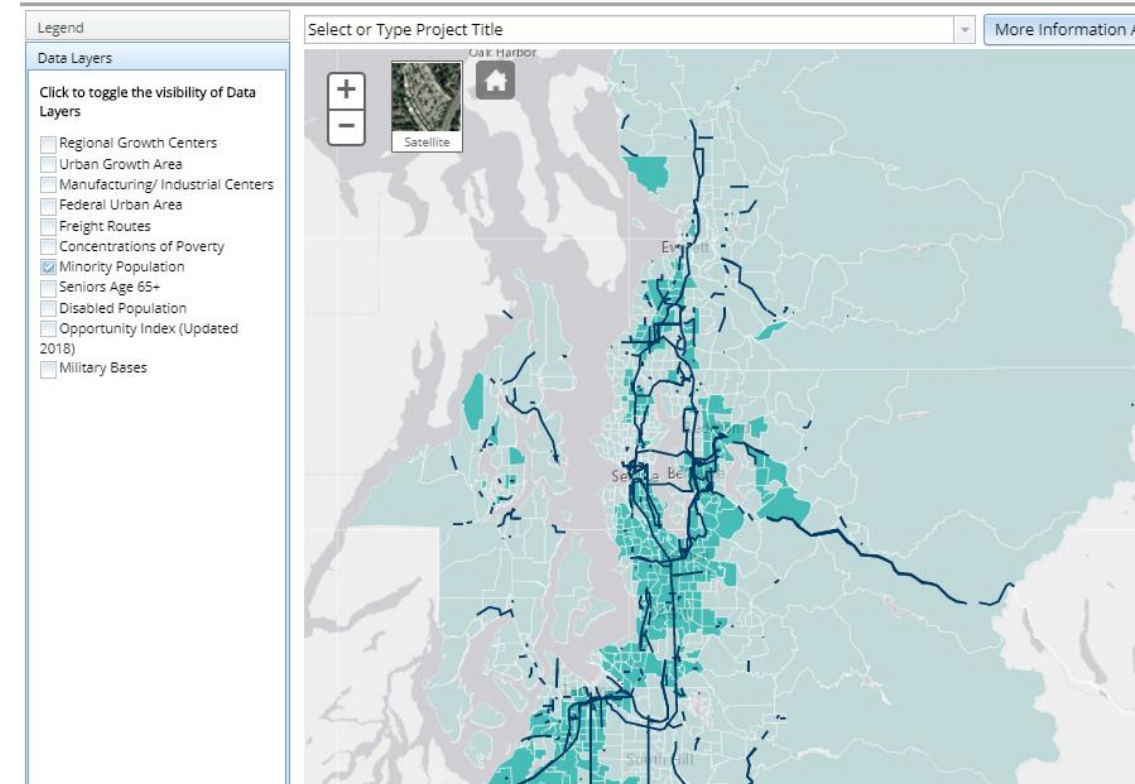
# PSRC History



## Examples

- Central Puget Sound Demographic Profile
- Destination 2030 EJ Analysis
- Transportation 2040 EJ Analysis
- EJ Analyses on Regional TIPs

## PSRC 2019-2022 Regional TIP Map



# Member Direction on Equity



## VISION 2050 Scoping Direction

- Define social equity
- Assess policies through an equity lens
- Develop strategies to mitigate disparities and reduce displacement

## Work Sessions with Members and Stakeholders

- Incorporate equity into vision statement
- Provide local jurisdictions with tools
- Engage underrepresented groups

VISION 2050 



**Scoping Report**

June 2018





# Equity Analysis

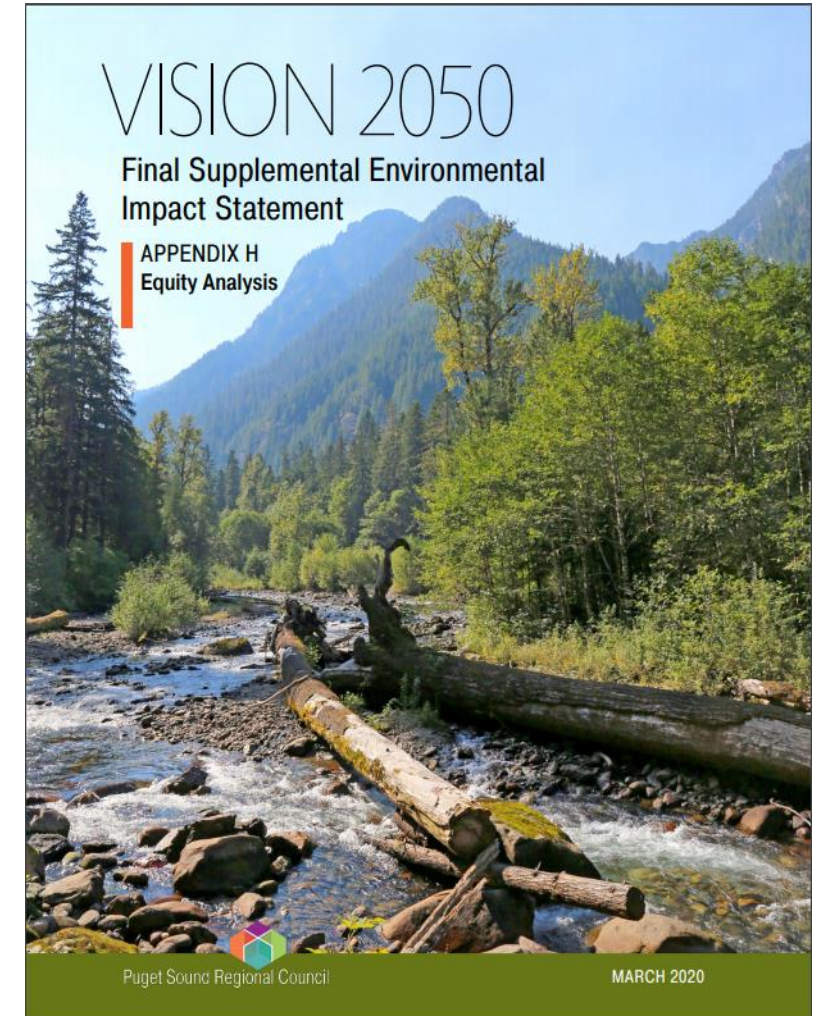


## Existing Conditions

- Regional demographics
- TOD areas and centers

## Equity Geographies

- Census tracts with over 50% people with low income
- Census tracts with over 50% people of color



# Region's Demographics

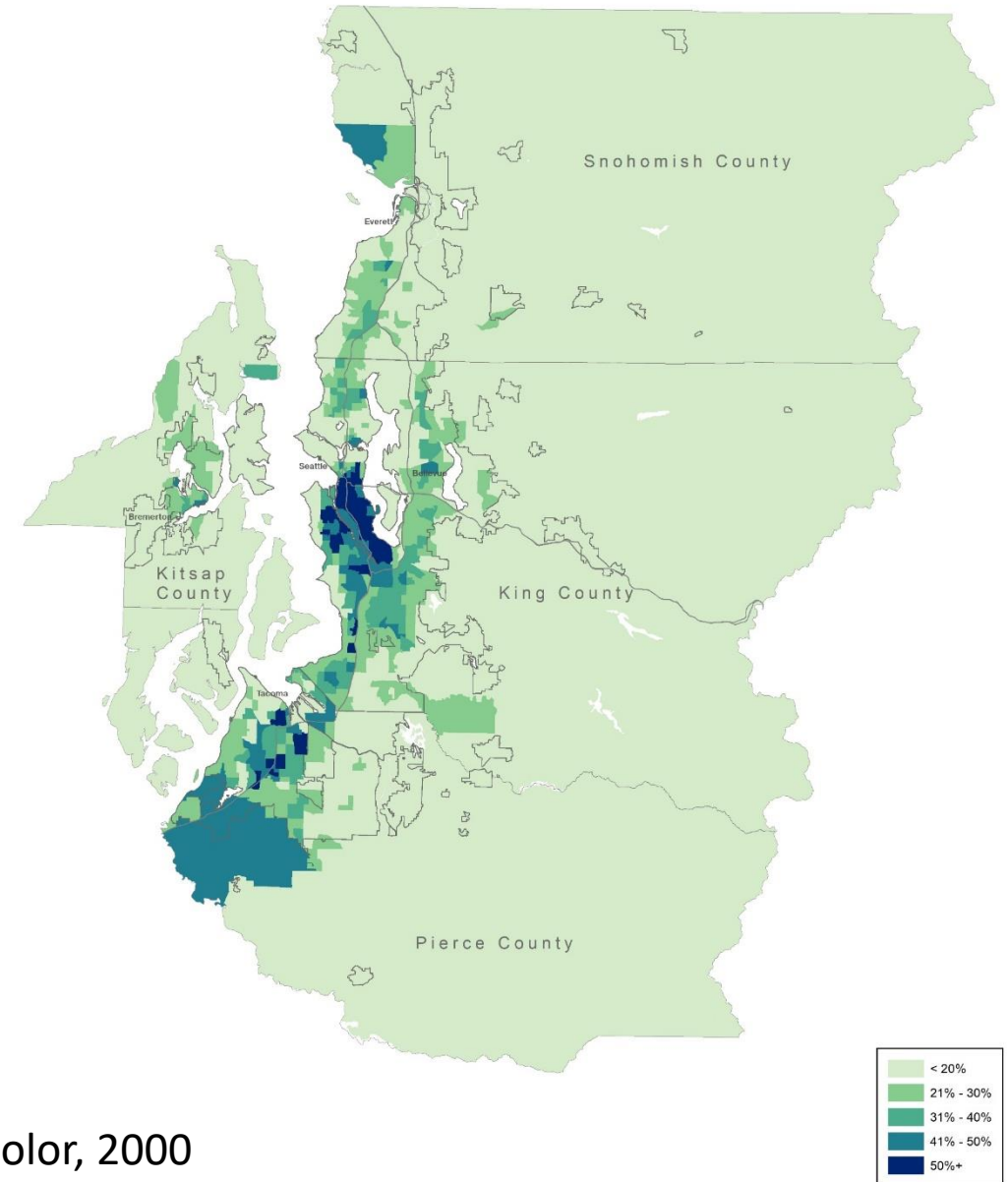
## People of color represent:

**24%** of region's population in 2000

**35%** of region's population in 2016

**81%** of region's growth since 2000

**15 cities at or near 50%+ people of color in 2017**



People of Color, 2000

# Region's Demographics

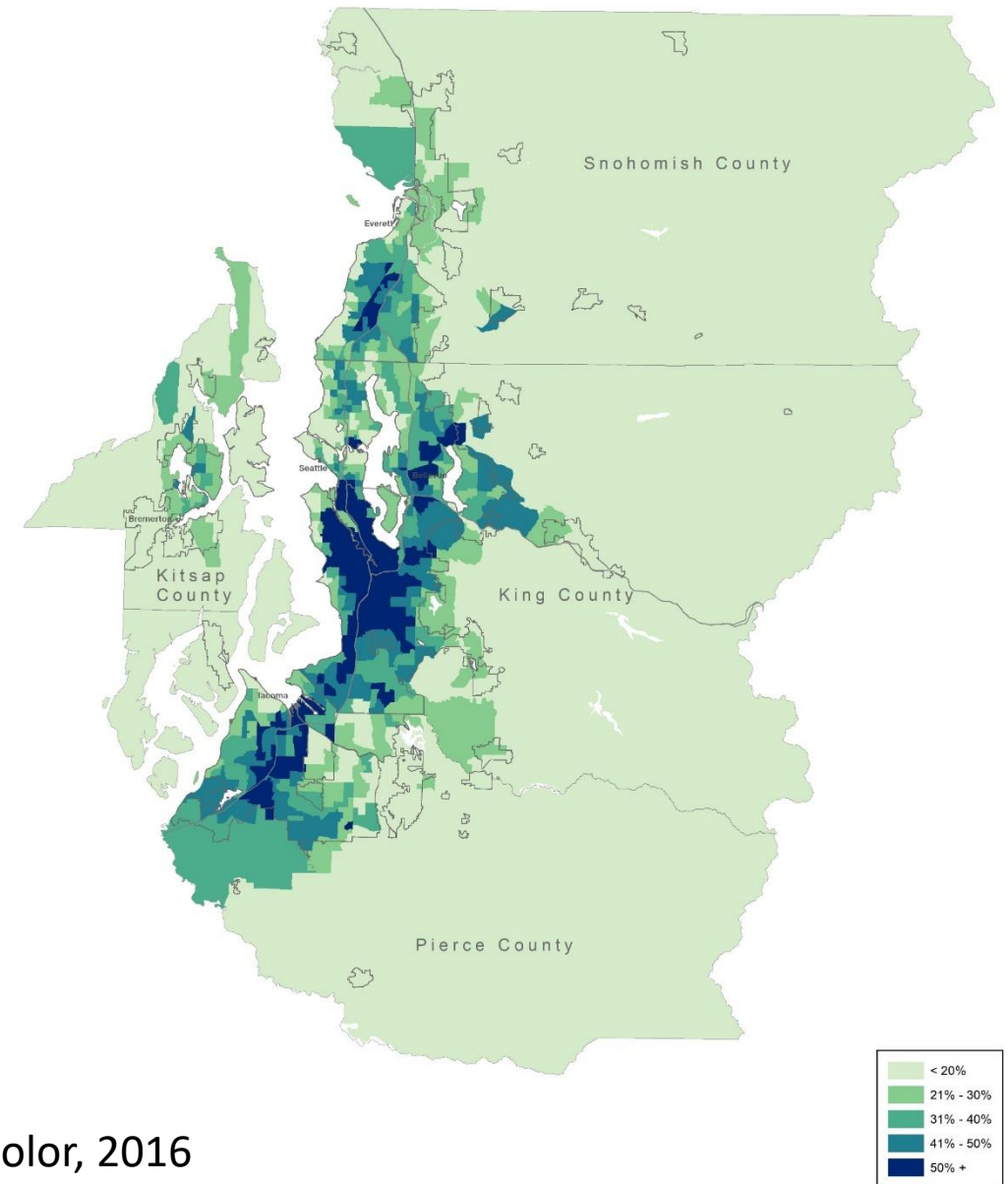
## People of color represent:

**24%** of region's population in 2000

**35%** of region's population in 2016

**81%** of region's growth since 2000

**15 cities at or near 50%+ people of color in 2017**



People of Color, 2016

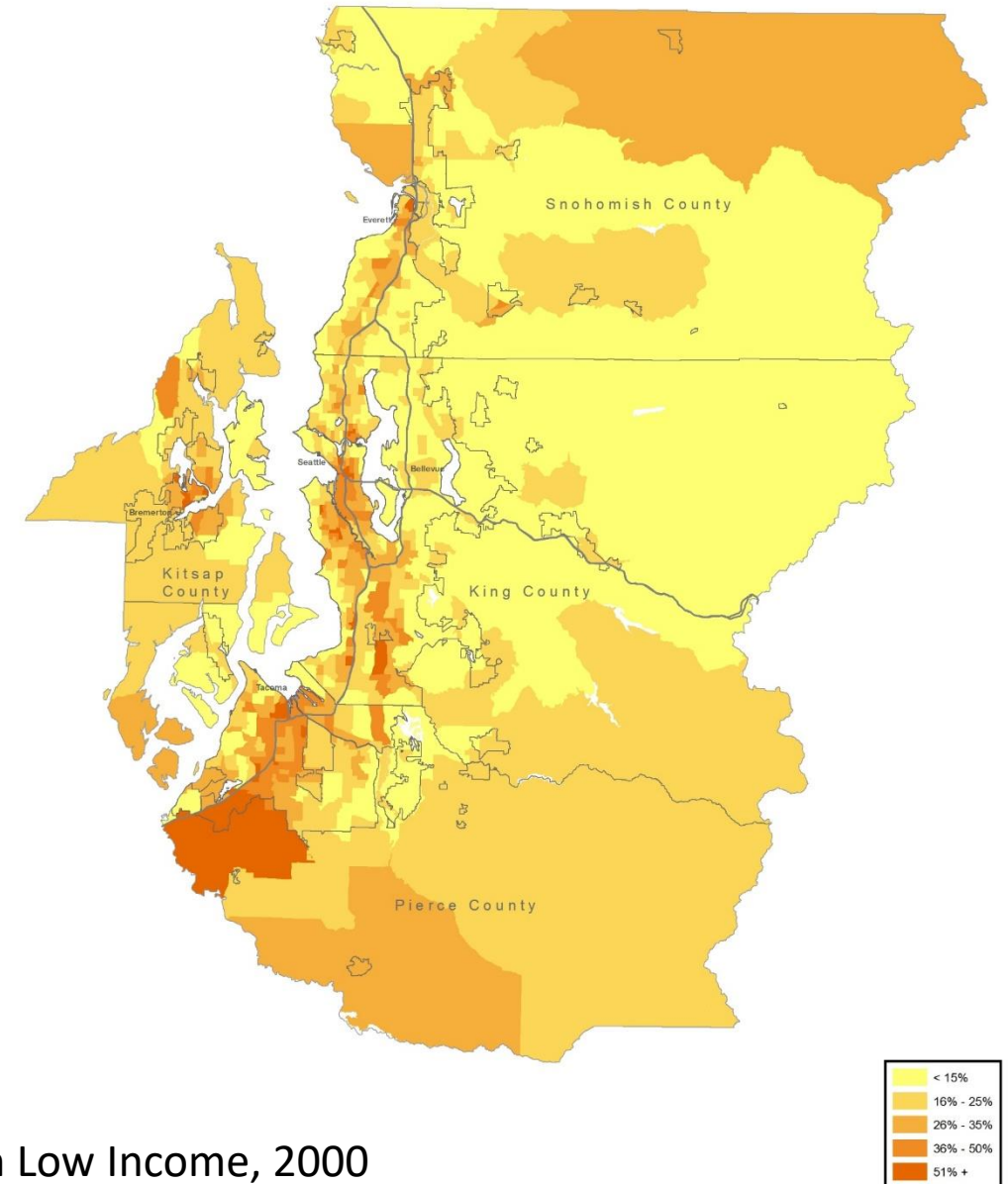


# Region's Demographics

Low-Income population includes households with incomes less than 200% of the federal poverty level:

21% of region's population in 2000

24% of region's population in 2016



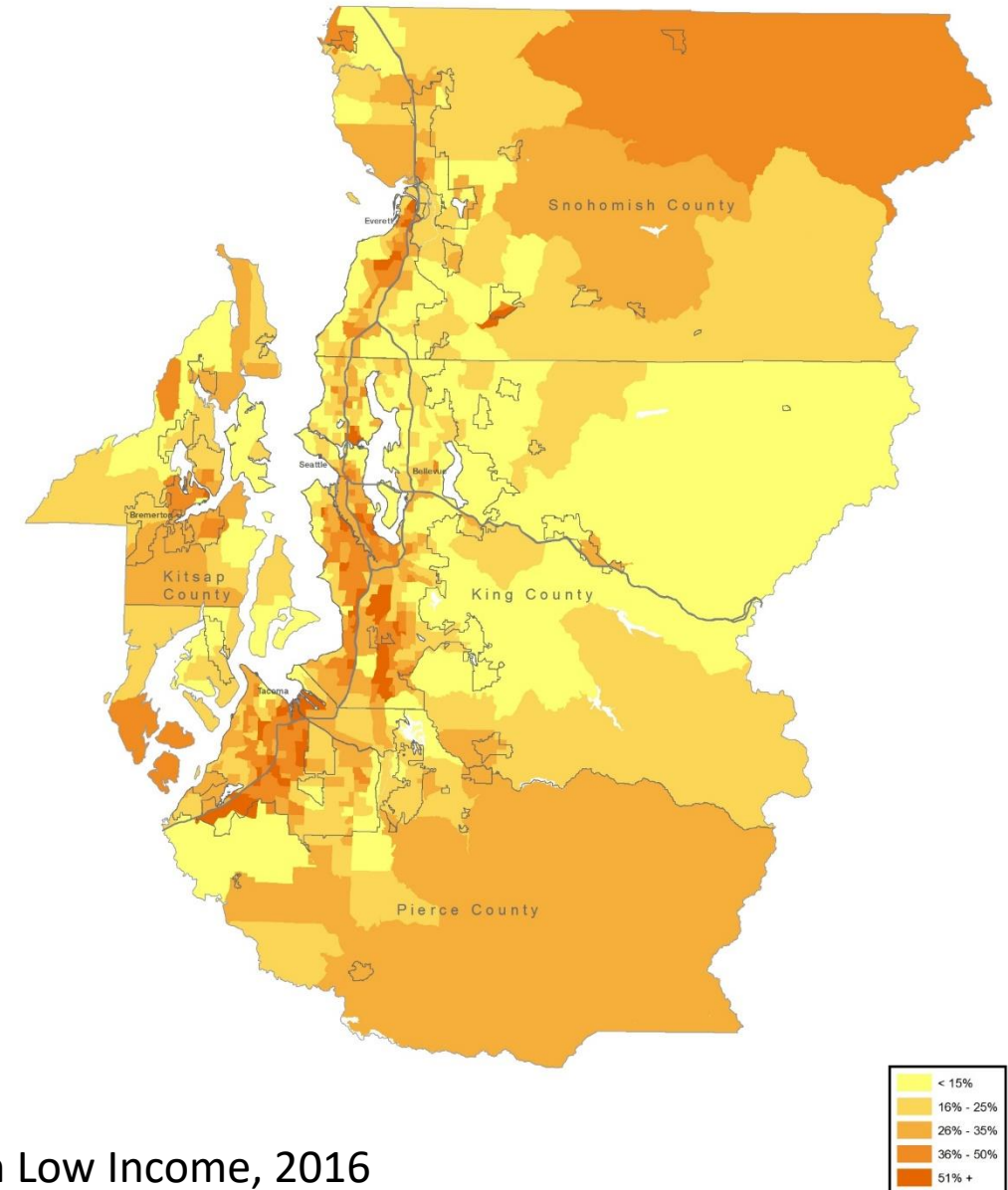
People with Low Income, 2000

# Region's Demographics

Low-Income population includes households with incomes less than 200% of the federal poverty level:

21% of region's population in 2000

24% of region's population in 2016



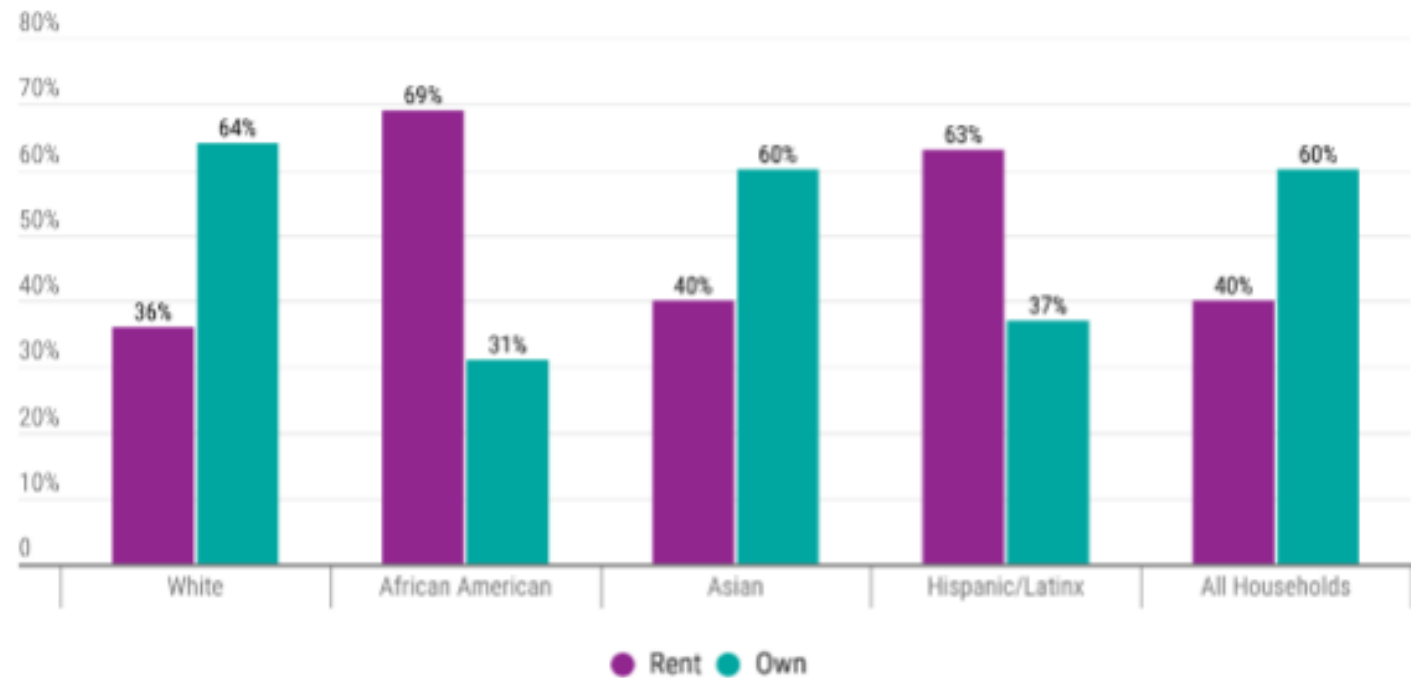
People with Low Income, 2016

# Housing Tenure by Race



## Existing Conditions

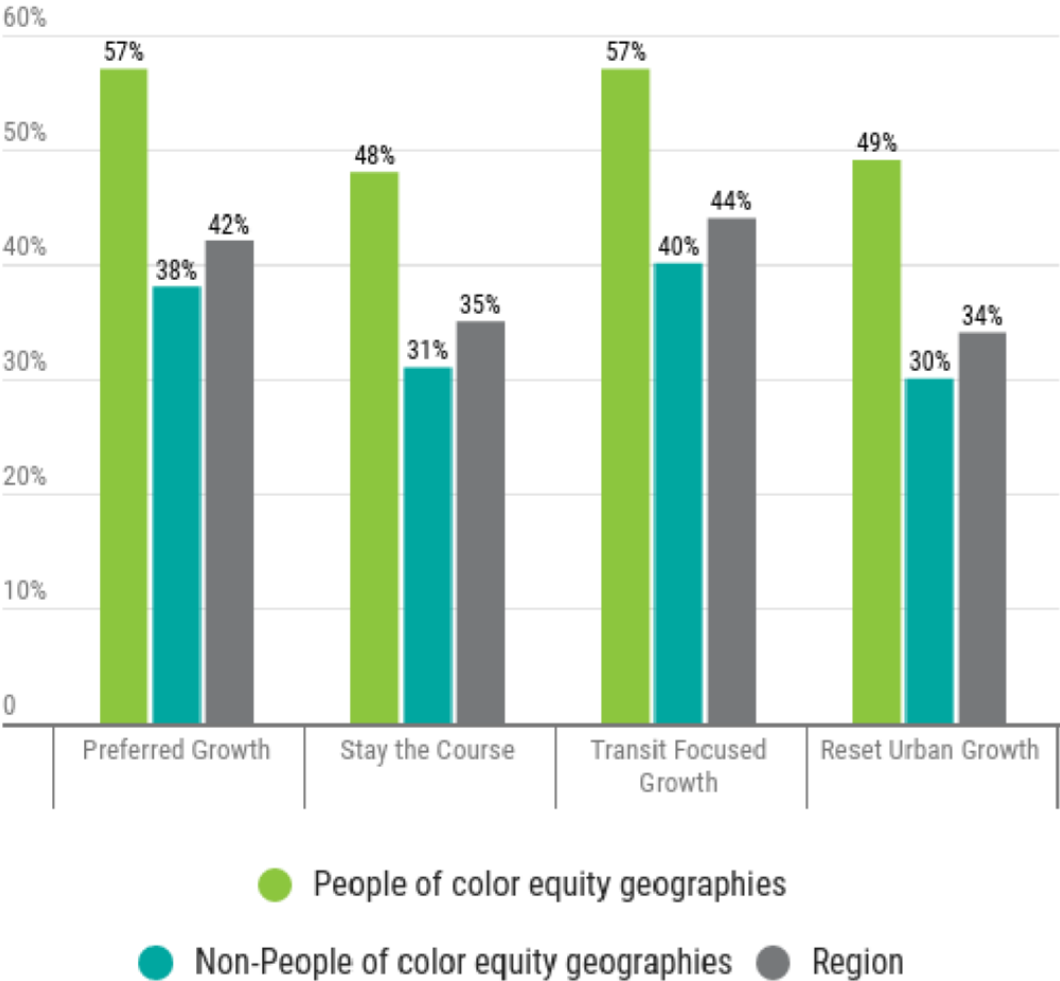
- Black homeownership rate is half the size of the White homeownership rate



Source: ACS



# Population and Employment

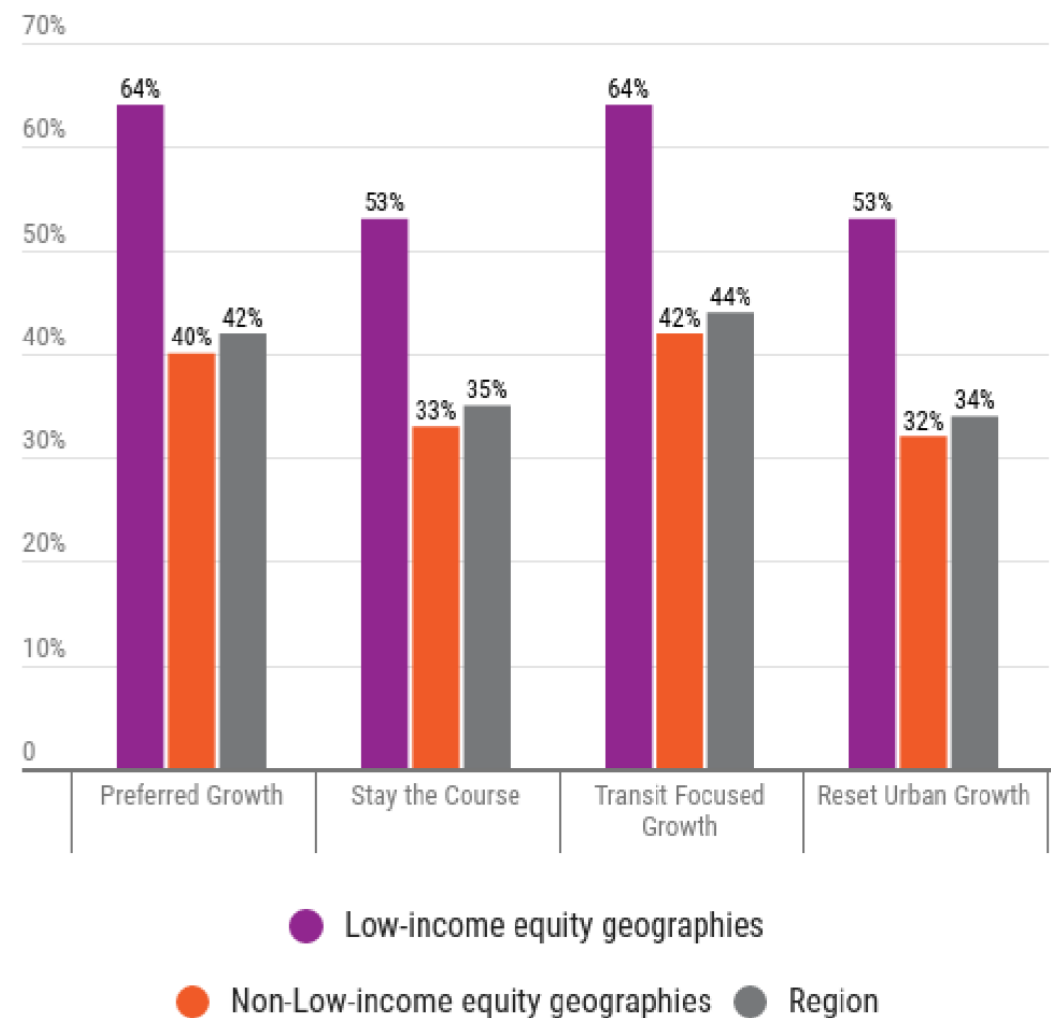


Population and Employment in Proximity to High-Capacity Transit, 2050, People of Color

Source: PSRC



# Population and Employment



Population and Employment in Proximity to High-Capacity Transit, 2050, Low Income Population

Source: PSRC

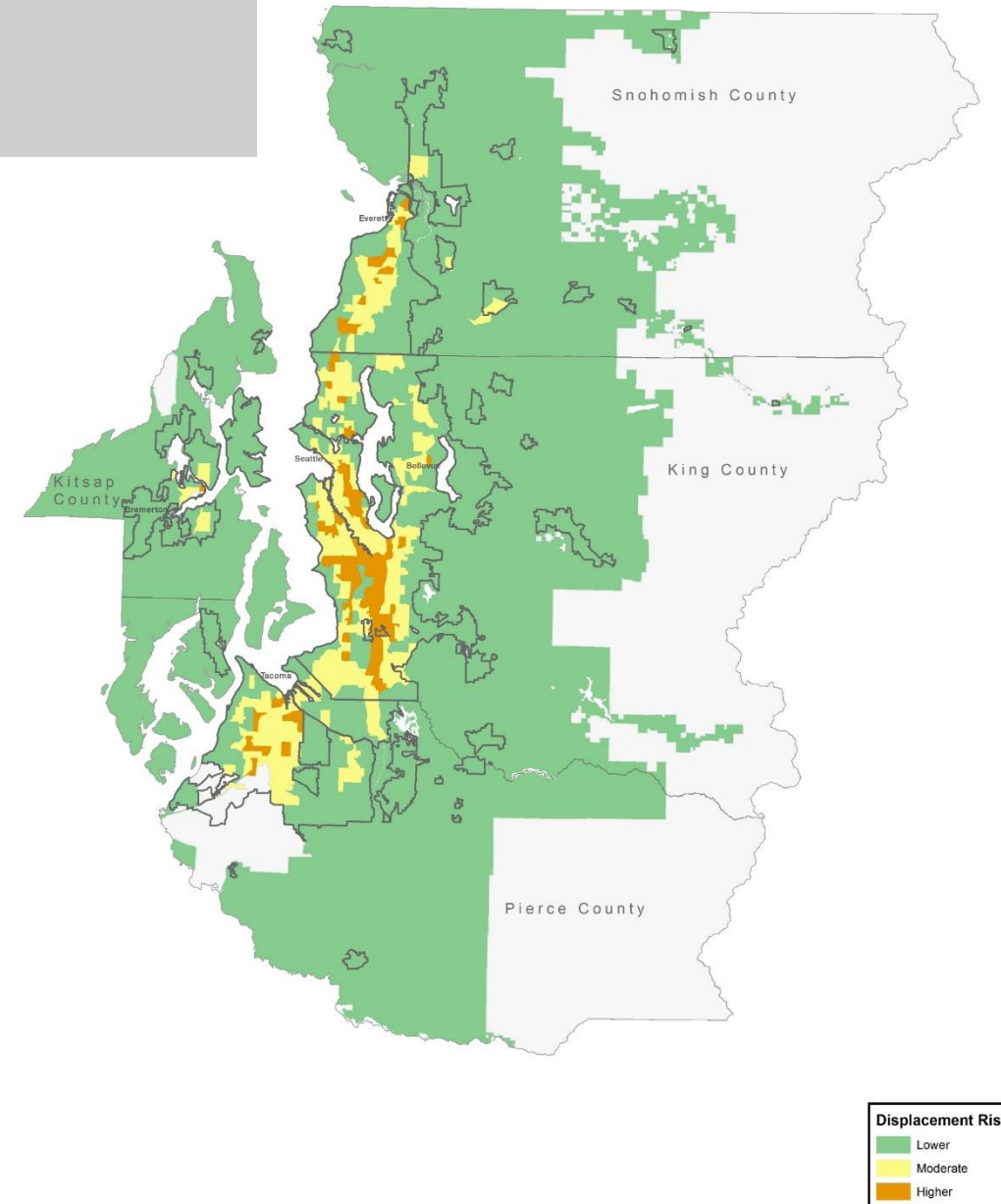
# Displacement Risk Mapping

## Application of tool:

Analysis of growth in VISION 2050 Draft Supplemental EIS

Regional policy development in VISION 2050

Technical assistance for local jurisdiction





# Displacement Risk Mapping

## Socio-demographics

- Race/ethnicity
- English proficiency
- Education attainment
- Renters
- Household income

## Housing

- Housing cost-burden
- Median rent
- Development capacity

## Neighborhood attributes

- Proximity to businesses
  - Supermarkets
  - Pharmacies
  - Restaurants
- Proximity to schools
- Proximity to parks
- Proximity to high-income

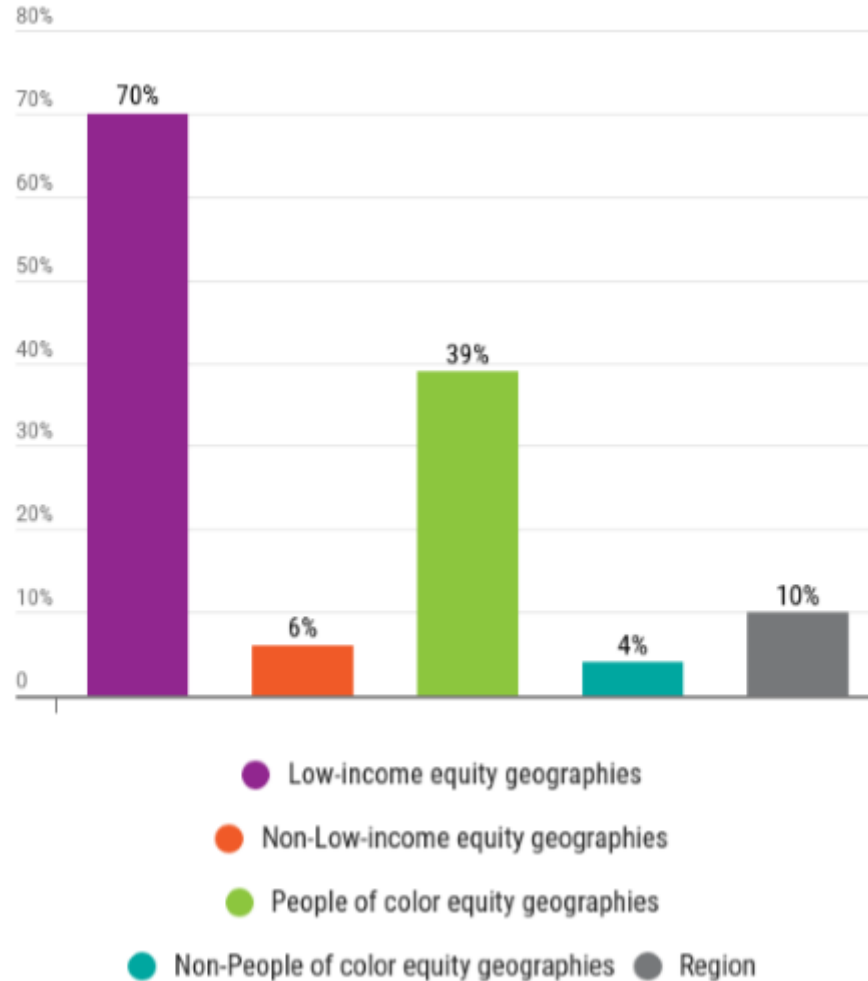
## Transportation qualities

- Access to jobs
  - By auto
  - By transit
- Proximity to transit
  - Existing
  - Planned

## Civic engagement

- Voter turnout

# Displacement Risk Mapping



Source: PSRC

# Opportunity Mapping

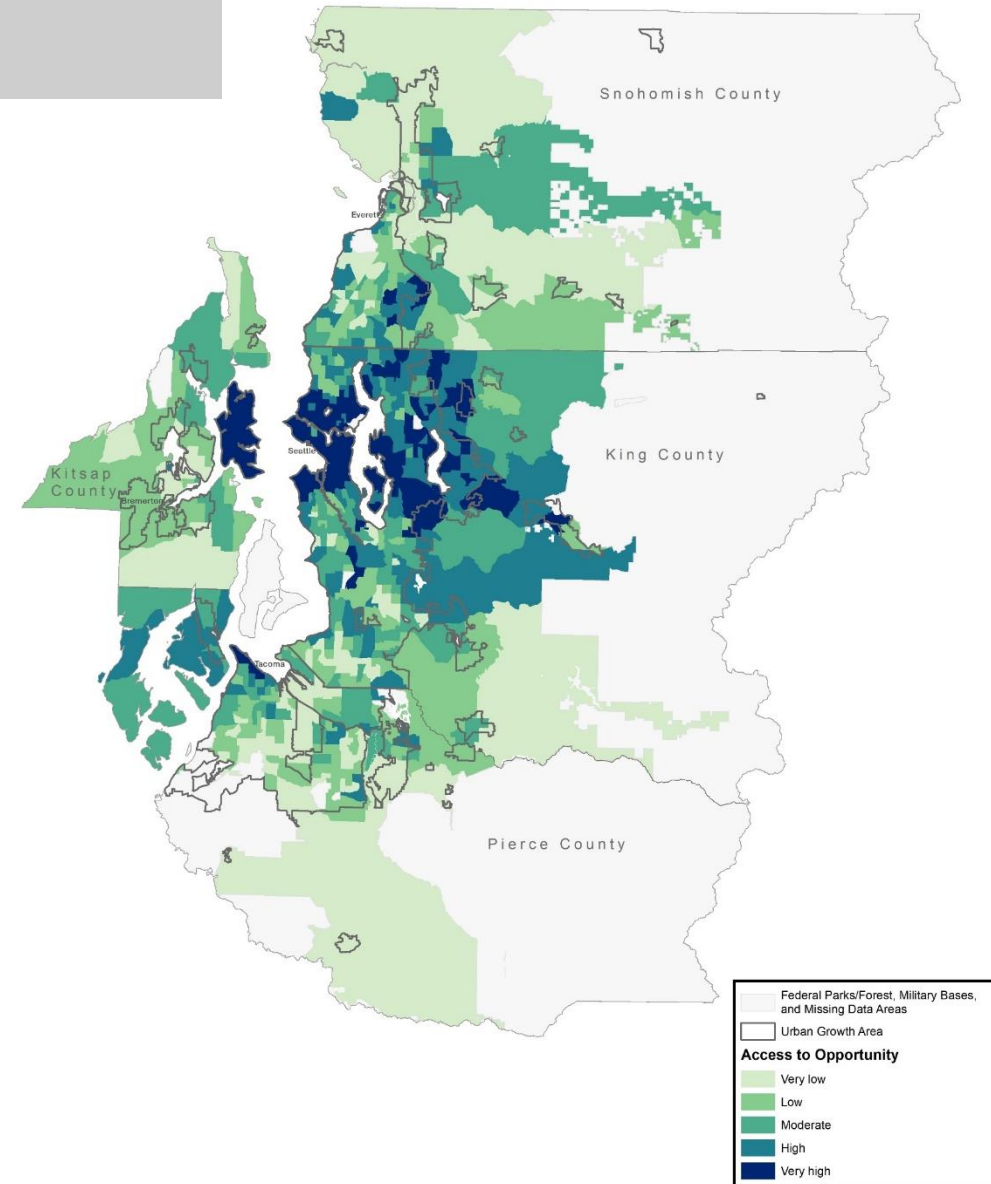
## Application of tool:

Analysis of growth in VISION 2050 Draft Supplemental EIS

Regional policy development in VISION 2050

Project selection criterion for the distribution of PSRC's transportation funding

Technical assistance for local jurisdiction





# Opportunity Mapping

## Education

- English test scores
- Math test scores
- Student poverty
- Teacher qualifications
- Graduate rates

## Economic health

- Living wage jobs
- Job growth trends
- Unemployment rates

## Housing & Neighborhood quality

- Housing vacancy rates
- Housing conditions
- Crime index

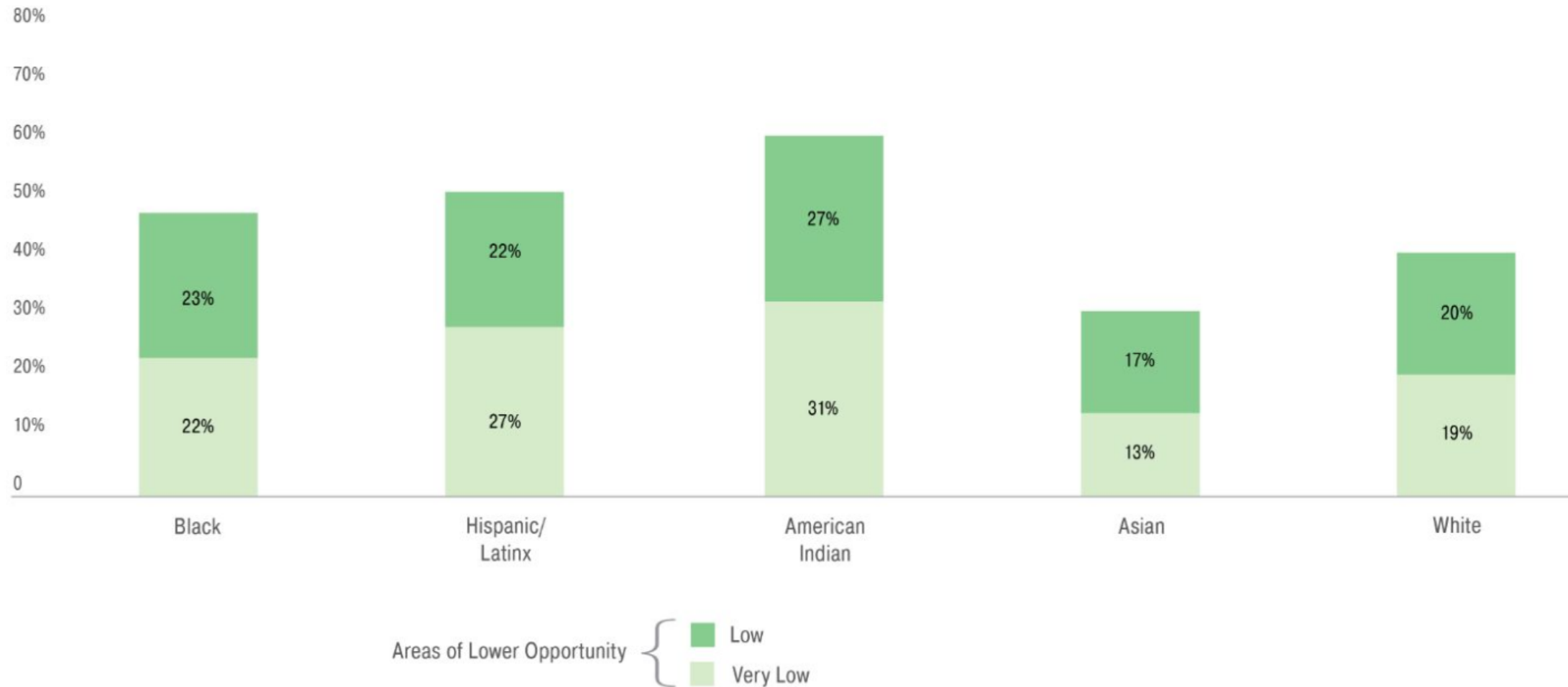
## Mobility & Transportation qualities

- Drive commute costs
- Access to transit
- Average transit costs
- Walk commutes

## Health & Environment

- Proximity to parks
- Toxic waste
- Access to healthy food

# Opportunity Mapping



# Engagement Tools



## Social Media Posts and Ads

- Targeted underrepresented communities

## Outreach Toolkit

- Shared presentation with members and partners

## Translated Materials

- Postcards translated into 9 languages





# Outreach



## Open Houses

- In-depth conversations with residents from around the region about different policy areas
- Nearly 200 attendees

## Community Events

- Raised awareness of PSRC and VISION 2050
- Engaged with hundreds of residents

## Online Open House

- Available for entire 60-day comment period
- Almost 6,000 pageviews



# Youth Events



Met with six local youth committees

Heard from over 100 students





# Thank you.



More information: [psrc.org/equity](https://psrc.org/equity)

**Charles Patton**

Equity Manager  
cpatton@psrc.org