

PENNDOT's Strategic Environmental Management Program (SEMP)

Presentation to:

AASHTO EMS Workshop
August 2003

PENNDOT's SEMP

- Overview provided by –
 - Gary Hoffman, P.E. – Deputy Secretary, Highway Administration
- Implementation discussed by –
 - Jim Slaughenhoup – Engineering District 10 Assistant District Executive/Maintenance

SEMP – Our commitment

- PENNDOT's program for environmental stewardship –
 - ALL employees have a responsibility for and ownership of PENNDOT's actions, decisions, facilities, and equipment that interact with the environment.

Basis of SEMP

- SEMP began with a commitment to environmental stewardship –
 - Governor Tom Ridge's March 1998 Green Government Executive Order.

Key elements –

Incorporate *"environmentally sustainable practices"*
"strive for continuous improvement in environmental performance"

"State government to lead by example."

"We cannot expect more from Pennsylvania residents than we are willing to do ourselves."

SEMP Continuation

- Governor Ed Rendell, who took office this past January, recommitted to the Green Government Order.

Keys –

Continued commitment demonstrates importance of program to employees and citizens.
The focus on environmental stewardship, performance, and improvement facilitates continuity.

SEMP Commitment

- Green Plan Policy – 6 principles to
 - Protect the environment,
 - Prevent pollution and use resources efficiently,
 - Follow sound environmental practices in all activities,
 - Comply with requirements,
 - Continually improve, and
 - Provide measurable benefits.

SEMP Commitment (cont'd)

- Green Plan Policy –
 - Originally signed by Secretary Mallory in 2001,
 - Recently signed anew by Secretary Biehler.

Keys –

Re-signing the Green Plan Policy:

- reinforces continued management commitment to stewardship,
- provides an event that draws attention to PENNDOT's environmental stewardship efforts.

SEMP – What is it?

- A management and operational framework for ALL – it's intended to:
 - Empower all employees,
 - Eventually encompass each of PENNDOT's basic functions,
 - Provide procedures, processes, and tools that enable all employees to practice stewardship.
 - Keys are simplicity and building on best practices.
 - Challenge is to simplify the complex.

SEMP Supports other Initiatives

- Annual Business Plans – address 7 Strategic Focus Areas (SFAs)
 - Maintenance First
 - Quality of Life
 - Mobility and Access
 - Customer Focus
 - Innovation and Technology
 - Safety and Security
 - Maximize Organizational Performance

The Quality of Life SFA addresses environmental performance and issues and provides a basis for SEMF.

Other Initiatives (cont'd)

- Strategic Objectives within the Quality of Life SFA
 - Implement a strategic environmental management program (**SEMP**) that adopts best practices as our way of doing business.
 - Develop timely transportation plans, programs and projects that balance social, economic, and environmental concerns.
 - Implement primary initiatives of the Sound Land Use Implementation Plan.

Other Initiatives (cont'd)

- Annual Business Plans contain –
 - Actions,
 - Objectives,
 - Measures, and
 - Targets.
- Performance is set forth in and measured with Dashboards and Scorecards.

SEMP provides the structure to implement actions, objectives, and targets at all levels – not just upper management.

Other Initiatives (cont'd)

- SEMP supports and provides a means to coordinate PENNDOT Green Plan efforts –
 - Pollution Prevention/Energy Efficiency
 - Waste Elimination
 - Recycling
 - Environmental Management Information System

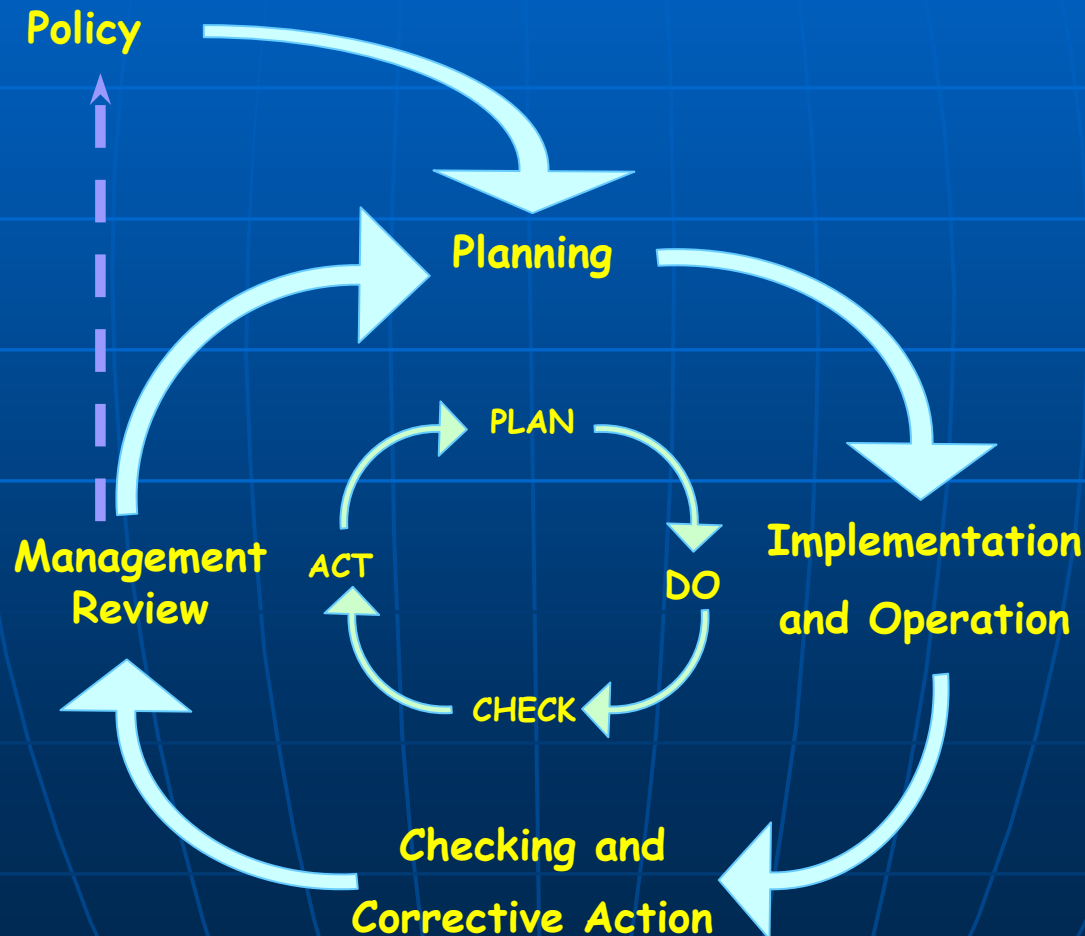
Other Initiatives (cont'd)

- Continual improvement –
 - Assessment of progress,
 - Identification of new opportunities,
 - Solicit environmental improvements from work force.

SEMP is based on the PLAN, DO, CHECK, ACT structure highlighted in the AASHTO EMS Process Roadmap.

Other Initiatives (cont'd)

- SEMP continual improvement cycle



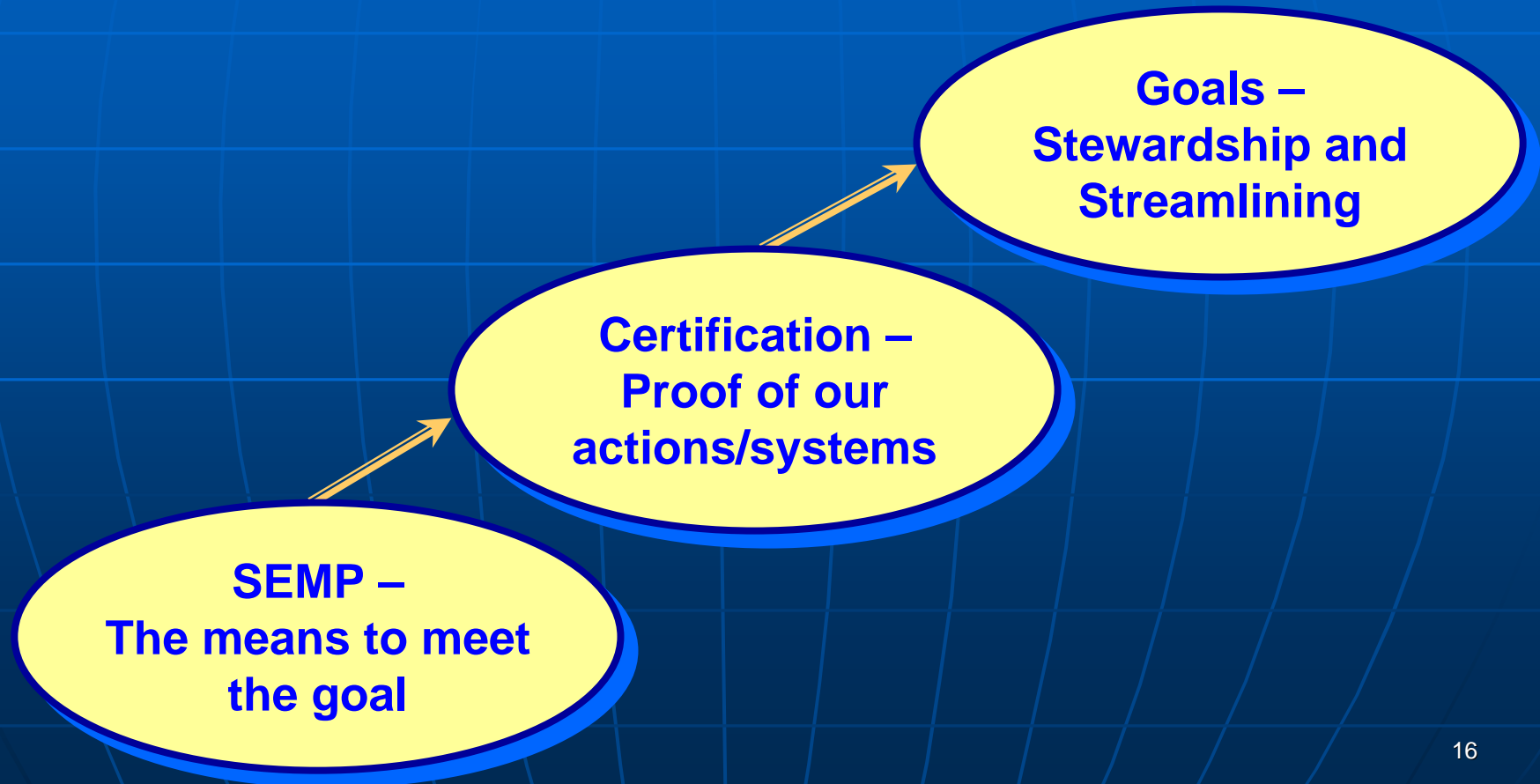
Other Initiatives (cont'd)

- Environmental streamlining
 - Regulatory agency coordination on a routine basis.
 - Self evaluation and monitoring.
 - Stakeholder integration and communication.
 - Shorten review and approval cycles.

SEMP's demonstrates commitment to and means to ensure environmental excellence. This shows "proof" to regulators.

Other Initiatives (cont'd)

- Environmental streamlining (cont'd)



SEMP Status

- *ISO 14001 certification* of District 10 maintenance unit SEMP.
 - Recent surveillance audit by registrar confirms that SEMP is being sustained.
- Maintenance unit SEMP implementation underway in Districts 4, 5, 11, and 12.

SEMP Status (cont'd)

- Maintenance unit SEMP focuses (initially) on –
 - Winter services,
 - Stockpile and garage operations,
 - Highway maintenance – control/prevent erosion and sediment runoff.

SEMP has provided demonstrated, measurable environmental and economic benefits.

SEMP Plans

- Plan for ISO registration of maintenance units in Districts 4, 5, 11, and 12 in 2003.
- Beginning maintenance unit SEMP implementation in 6 remaining Districts.
 - Plan for ISO registration in 2005.
- Expand to Design, Construction and other Deputates as resources permit.

The Ultimate Goal and Benefit of SEMP

**Change the culture of
our workforce!**